

Experiencies from ASMO



JA / VG
22.1.2014

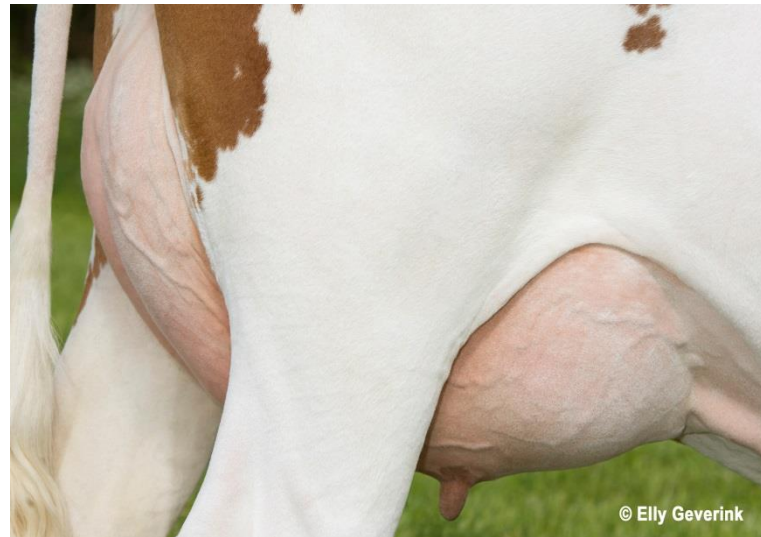
Genomic test of females

Finland / ASMO

Based on genomics

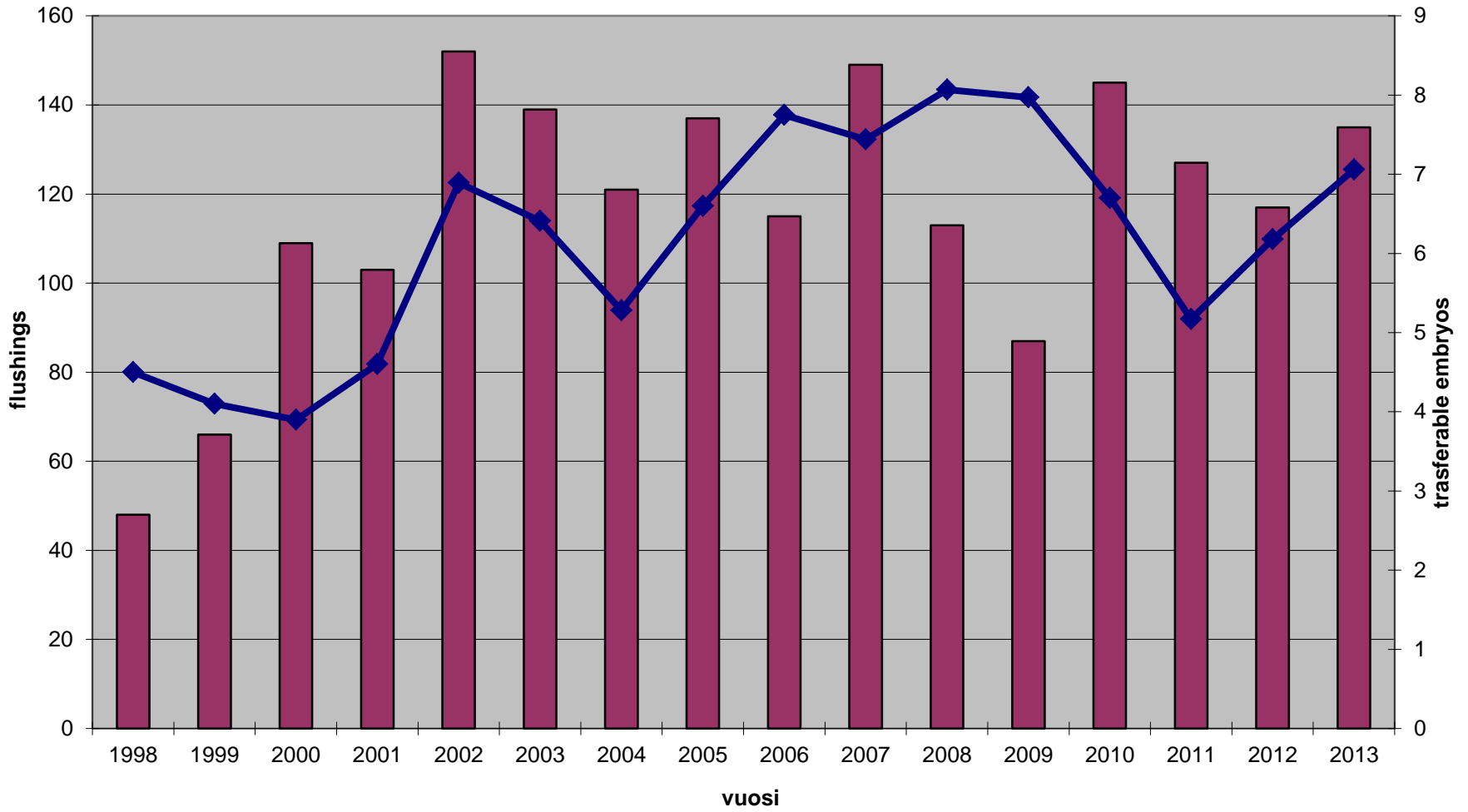
- Agreement with
farmers:

1. Buying heifer to ASMO
flushing
2. Renting heifer to ASMO
flushing
3. Farmer flush heifer at
homefarm



	Den	Swe	Fin
HOL	2352	148	1272
RDC	975	1656	3156
JER	3881	87	9

ASMO heifers, flushings 1998-2011



■ Total flushings ◆ Transferable embryos

Embryo flushings in ASMO 2013

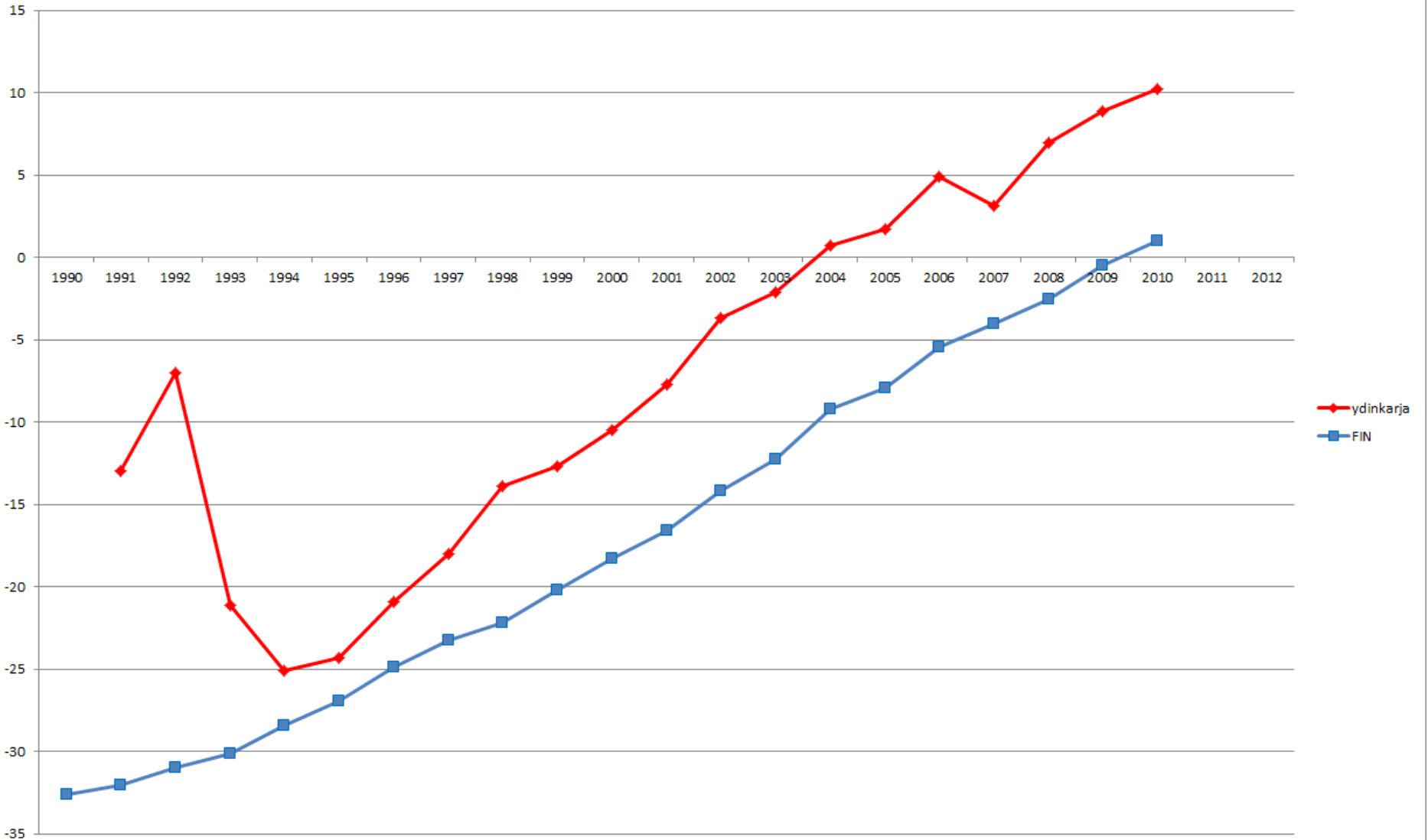
	AY	HOL	All
Flushings - heifers (animals)	123 (68)	12 (6)	135 (74)
Flushings – cows (animals)	7 (5)		7 (5)
Nb of flushings / heifer	1,8	2,0	1,8
Age of heifer at first flushing (months)	15,0	15,1	15,0 (12,6-17,7)

Embryos (heifer flushings)

	AY	HOL	All
Transferable embryos	827	126	953
Transferable embryos/ flushing	6,7	10,5	7,1
Proportion of Class I embryos of all transferable embryos	78,6%	84,1%	79,3%

From 7 cow flushings 49 transferable embryos were recovered, average 7 transferable embryos / flushing

Perinnöllinen edistyminen: NTM, RDC lehmät genetic trend in NTM, rdc cows





ASMO statistic

- Recently app. 20 % of bought RDC bulls from ASMO origin in Finland
- 2012 born ASMO heifers
 - 66 ay -> +18 NTM + 4 HOL -> +28 NTM
- 2013 born ASMO heifers
 - 22 ay -> +19 NTM + 4 HOL -> +33 NTM
- Offspring production by ASMO flushings 2007-2012
 - Average 6,1 calves / heifer
 - 3,0 female calves/ heifer + 3,1 male calves / heifer

ET, Faba group in the field

	2010	2011	2012	2013
Flushes	250	272	273	216
Tr.embryos/fl	8,3	6,7	7,0	7,2
Tranfers	3531	4042	3658	2978

Flushings: 63 % hol and 31 % ay

Origin country of embryo

	2010	2011	2012	2013
Fi	2526	2988	2717	2203
Ca	735	725	637	512
NL	122	182	179	130
Den	17	29	31	82

- Sweden 2013
- 21 flushings
- 3,9 tr.embryos /flush
 - 10 contracted flushings
 - 5 no contract
 - 6 in Viken
- 8 Hol fl
- 12 RDC fl

- Denmark 2012
- 3064 embryo transfers
- 513 flushings



Thank you!

