

# NAV evaluation of udder linear and coordinate traits

**NAV**



Nordisk Avlsværdi Vurdering •

Nordic Cattle Genetic Evaluation

# Why use robotic milking data?

- **High genetic correlations** ( $\sim 0.90$ ) between udder linear and AMS traits
- **high heritabilities of AMS traits**
  - **→ Increased EBVs accuracy**
- **Information from multiple lactations**
  - **→ Accurate EBVs for 2<sup>nd</sup> and 3<sup>rd</sup> lactations**
- It is possible to get information from more herds than those enrolled in linear classifications today

**NAV**



Nordisk Avlsværdi Vurdering •

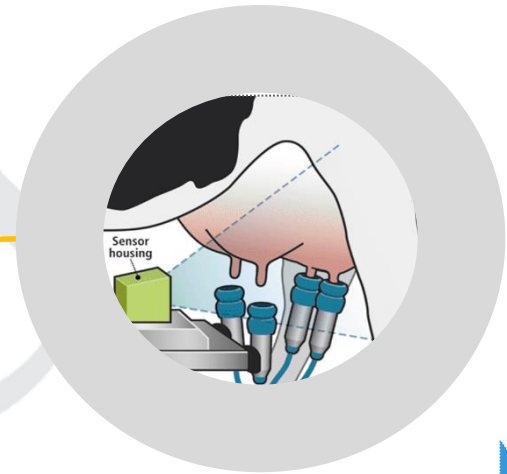
Nordic Cattle Genetic Evaluation

1989

Denmark starts recording linear traits: Teat placement front (TPLF) and udder depth (UD)

2008

AMS udder coordinates for TPLF, TPLB, UD and UB are collected in Danish herds



## Linear and AMS traits Timeline

2006

Teat placement rear (TPLB) and udder balance (UB) are added to the recording

2016

First time EBVs for udder traits are published with the new model including AMS information



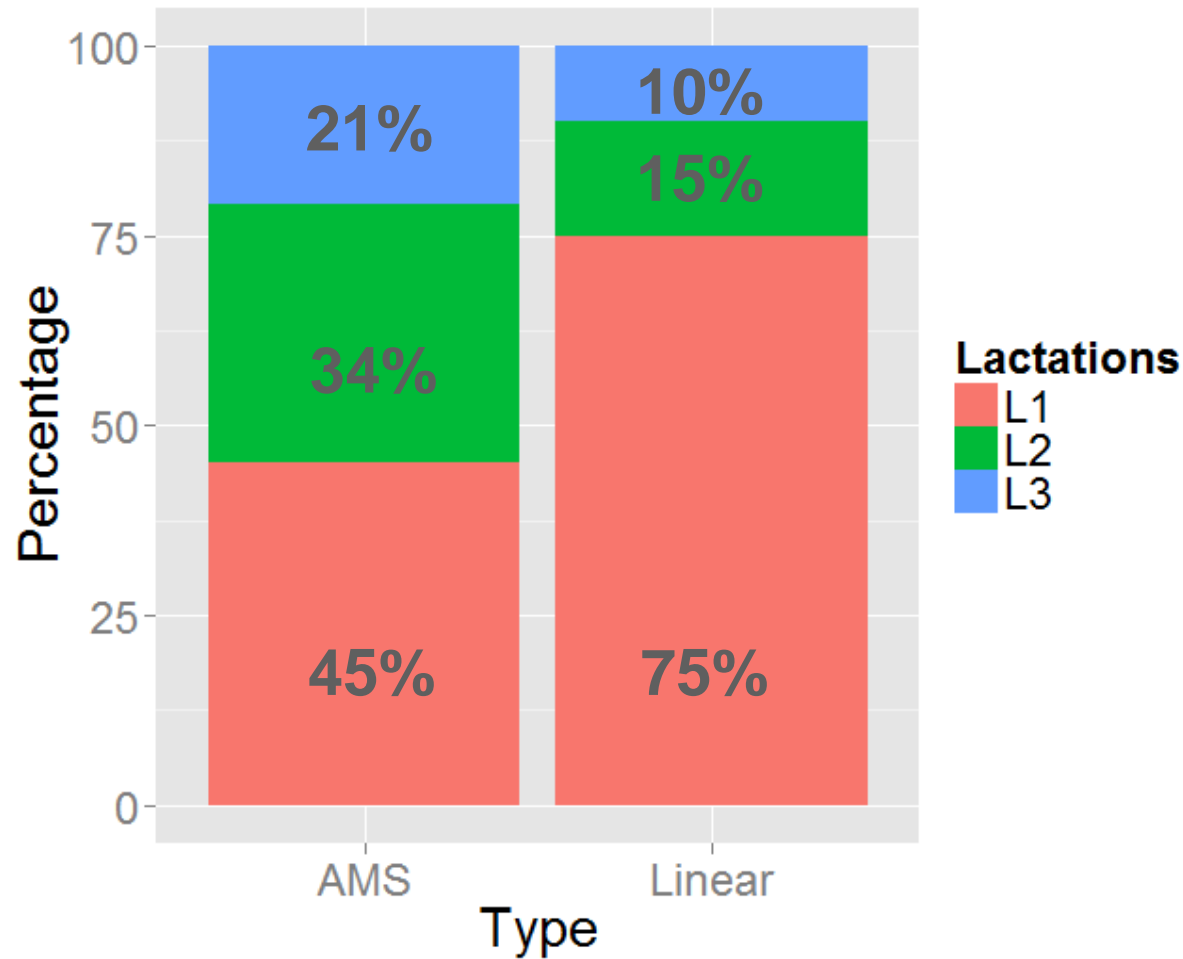
NAV



Avlsværdi Vurdering •

Nordic Cattle Genetic Evaluation

# Increased number of observations especially in later lactations from AMS



# Data from AMS in genetic evaluation

- Registrations from 2008
- Only Danish data
- 1. - 3. lactation
- Average of 30-60 DIM
- Correlated information to linear traits

**Dataset: 53.000 HOL, 3.400 RDC and 3.700 JER**

**NAV**



Nordisk Avlsværdi Vurdering •

Nordic Cattle Genetic Evaluation

# Genetic parameters

Trait	Heritability Linear score, 1. lact			Heritability AMS, 1. lact	Genetic correlation, 1. lact,
	HOL	RDC	Jersey	HOL,RDC, JER	HOL,RDC, JER
Front Teat Place.	0.32	0.27	0.27	0.61	0.91
Rear Teat Place.	0.28	0.26	0.26	0.48	0.93
Udder Balance	0.16	0.16	0.16	0.48	0.90
Udder Depth	0.39	0.34	0.34	0.67	0.97

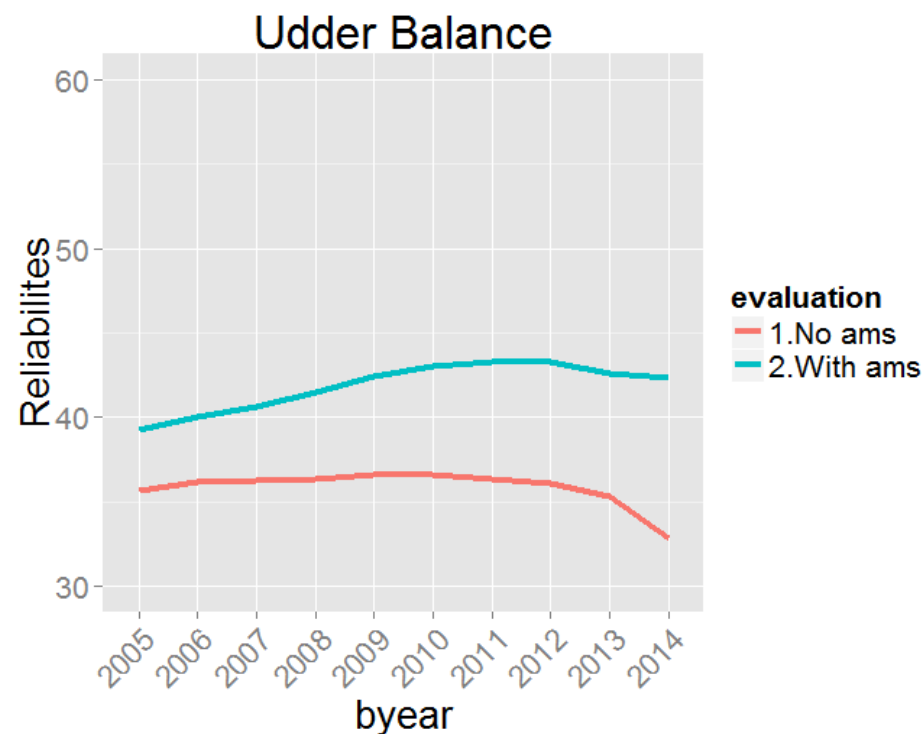
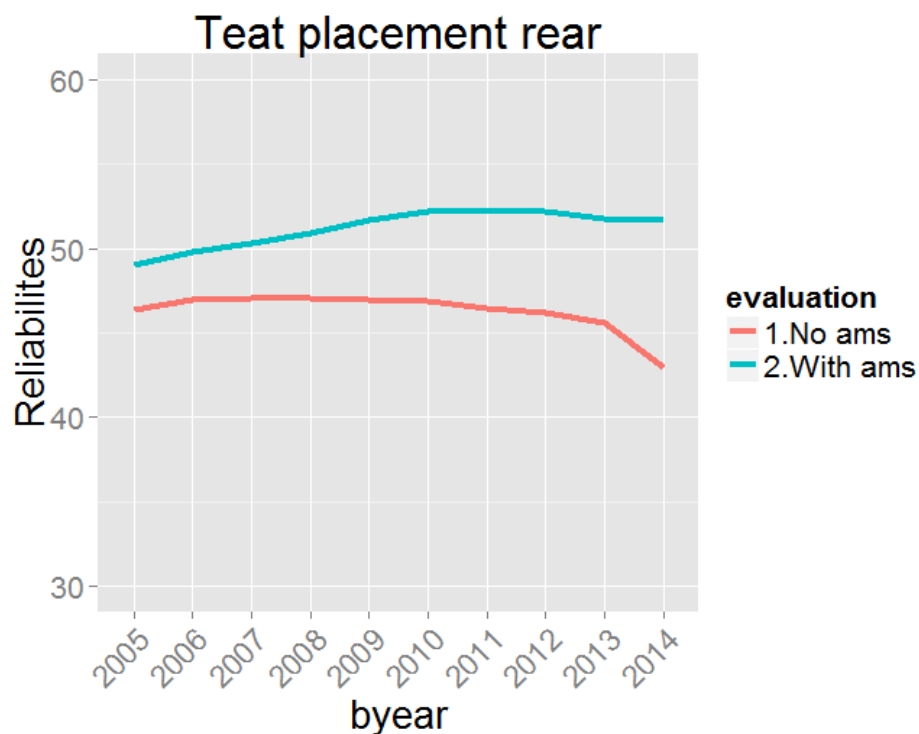
**NAV**



Nordisk Avlsværdi Vurdering •

Nordic Cattle Genetic Evaluation

# Largest changes for (Danish) cows with AMS records



Trait	Mean reliability – No ams	Mean reliability - with ams	Reliability increased for ams cows
TPLR	46,24	51,16	9,6%
UB	35,80	41,84	14,4%



# Changes

- **Bulls**
  - **Correlation: 0,99**
  - **Only few bulls change more than 2 index units**
- **Cows**
  - **Larger changes**

**NAV**



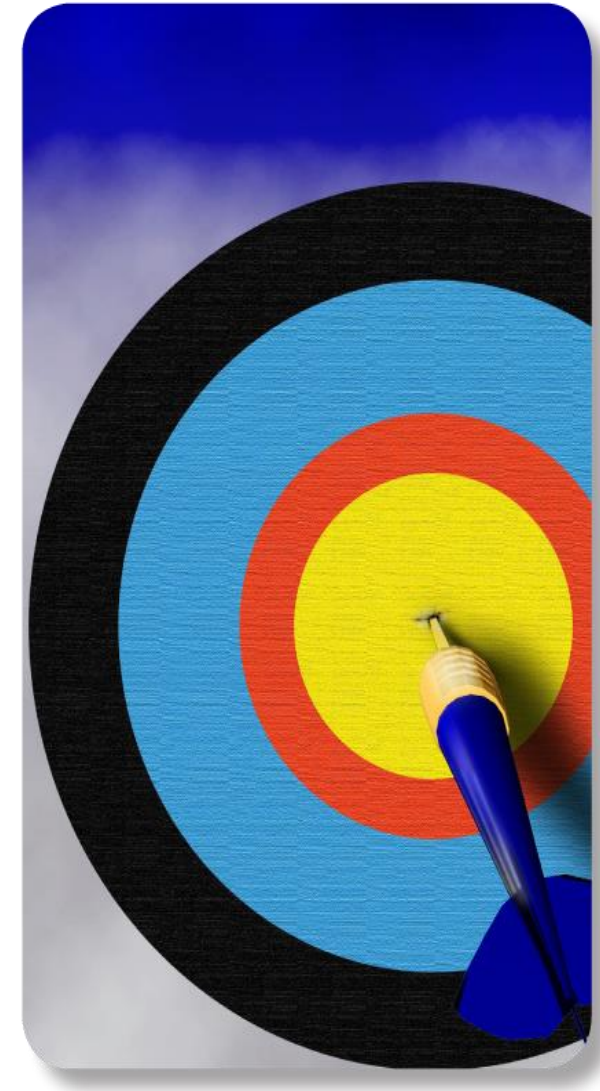
Nordisk Avlsværdi Vurdering •

Nordic Cattle Genetic Evaluation



# Final remarks

- No change on the genetic trends
- MORE Data: #3 lactations
- Higher reliability for cow EBVs in all 3 lactations
- Limited effect on the bulls EBV since they already have high reliabilities. Only a few bulls having many daughters with AMS data change more than 2 EBV units.



**NAV**



Nordisk Avlsværdi Vurdering •

Nordic Cattle Genetic Evaluation